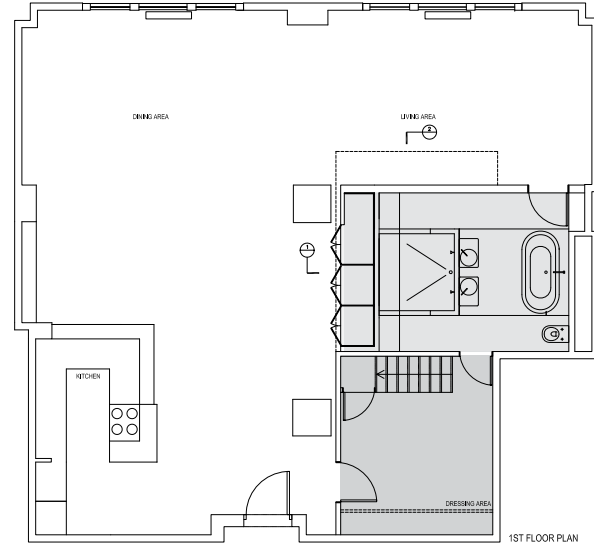
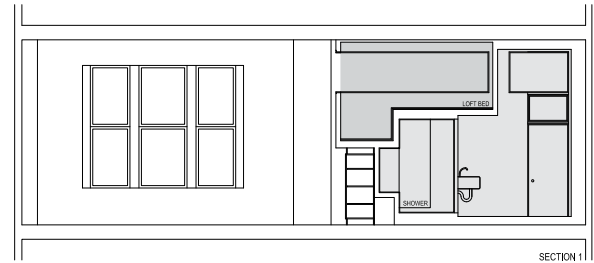
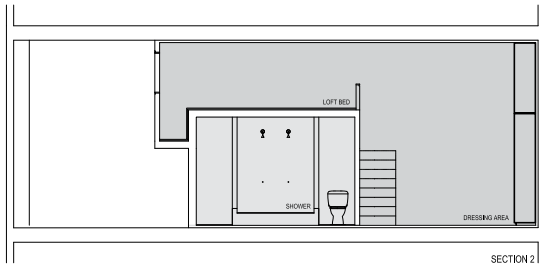




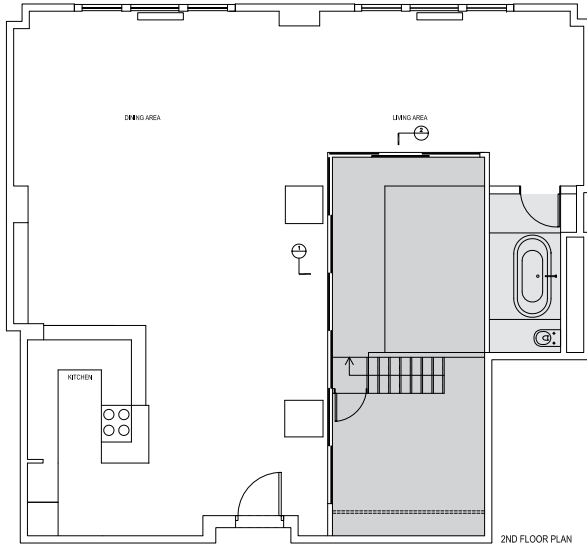
Two interlocking volumes are compressed into a space that is short of 13' high. This compression is enabled by using the ceiling of the bathroom below as the bed platform above. The two volumes form L-shaped spaces where one part is double height and the other is a lowered 7' space. The bedroom dressing area uses the high space while the loft bed is located in the lower part creating the interlocked portion with the bathroom ceiling. Details and colors were generated as a means of enhancing the interlocking volumes and detaching these enclosed private volumes from the open, public space of the loft.

- Photography: Danny Bright





SECTION 2



2ND FLOOR PLAN





HOUSE IN A LOFT

VIEW FROM LOFT BED SPACE





SHOWER UNDER BED PLATFORM



BATHROOM DOUBLE SPACE

HOUSE IN A LOFT



RESIDENTIAL

09

HOUSE IN A LOFT

- Date: - Completion: April 2009
- Client: - Yael Reinharz
- Budget: - \$110,000
- Area: - 1,500 sq.ft.
- Location: - 261 Broadway, New York